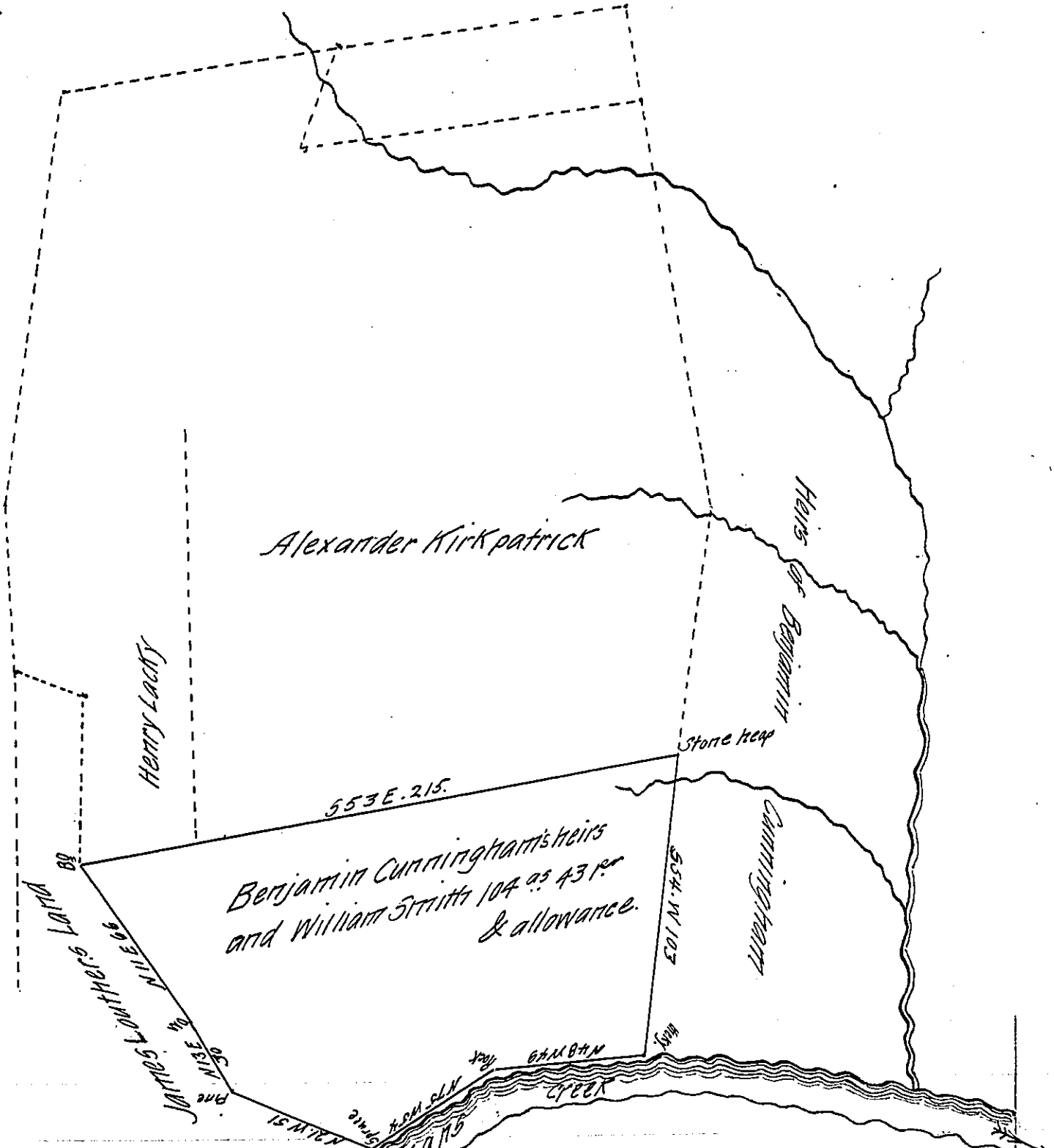


FORM NO. 1.



Situate in Tyrone Township Perry County containing one hundred and four acres forty three perches and allowance of six per cent for roads & Surveyed May 23<sup>rd</sup> 1822 in pursuance of a Warrant granted Thomas Smiley for 400<sup>ac</sup> dated 12<sup>th</sup> March 1793. G. Monroe D.S.

In Testimony that the above is a true copy of a draught remaining on file in the deputy Surveyor's Office of Perry County I have hereunto set my hand this 9<sup>th</sup> day of August A.D. 1828.

Gabriel Hiester Esq  
Surveyor General of Pa }

Wm Wilson D.S.

IN TESTIMONY that the above is a copy of the original remaining on file in the Department of Internal Affairs of Pennsylvania, made conformably to an Act of Assembly approved the 16th day of February 1833, I have hereunto set my hand and caused the Seal of said Department to be affixed at Harrisburg, this fourth day of June 1907

*Henry Howell*  
Secretary of Internal Affairs.